

Zantingh B.V.

Aarbergerweg 9, 1435 CA RIJSENHOUT
PO Box 255, 1430 AG AALSMEER
Telephone (+31) (0) 297 – 219 100
Email info@zantingh.com



ZANTINGH

CLIMATIX®: AN INTELLIGENT SYSTEM FOR MONITORING YOUR GAS BURNER REMOTELY

Digitalisation is in full swing in the gas burner market, and this is opening up plenty of opportunities. Zantingh is the first gas burner manufacturer in the world to supply burners equipped with Climatix. The Siemens application, which facilitates the remote monitoring of gas burners anywhere in the world, can be used on both new and existing systems equipped with the Siemens LMV burner management system. And all you need is an internet connection!

The screenshot displays the Climatix IC web interface. At the top, there is a navigation bar with 'Dashboard', 'Bediening', 'Applicatieset', 'Administratie', and 'Apps'. Below this, a breadcrumb trail shows 'Dashboard > Kaart'. The main area features a world map with five numbered location markers: 1 (red) in China, 2 (green) in Australia, 3 (green) in the USA, 4 (red) in the USA, and 5 (yellow) in the UK. A sidebar on the left contains 'Kaart', 'Overzicht', 'Zantingh DB', and 'Enduser'. A top right dropdown menu shows 'Alarm toestand'.

What is it?

Climatix is the cloud solution for remote monitoring and intelligent diagnosis. The online platform gives you access to all relevant burner and boiler data, and can also help you analyse that data. For example, data about the burner status, the current burner capacity, the flame signal and the hour meter. But you can also access data about safeguards on the boiler, such as the medium level and maximum temperature, and safeguards installed on peripheral equipment, like a flue gas condenser, a CO2 valve or the CO detector.

The data can be efficiently collected and evaluated using Siemens' cutting-edge technology. This enables you to make informed decisions, for example on regular maintenance activities, and to optimise the equipment's performance throughout its life cycle.

Bediening > Zantingh BV - TC 300099 (9 Aarbergerweg,Rij... > Installatie dashboard > Enduser

Installatie dashboard

Enduser

Enduser

Alarmen

Web beeld

Bestanden

Fase - Actuele waarde

12 Standby

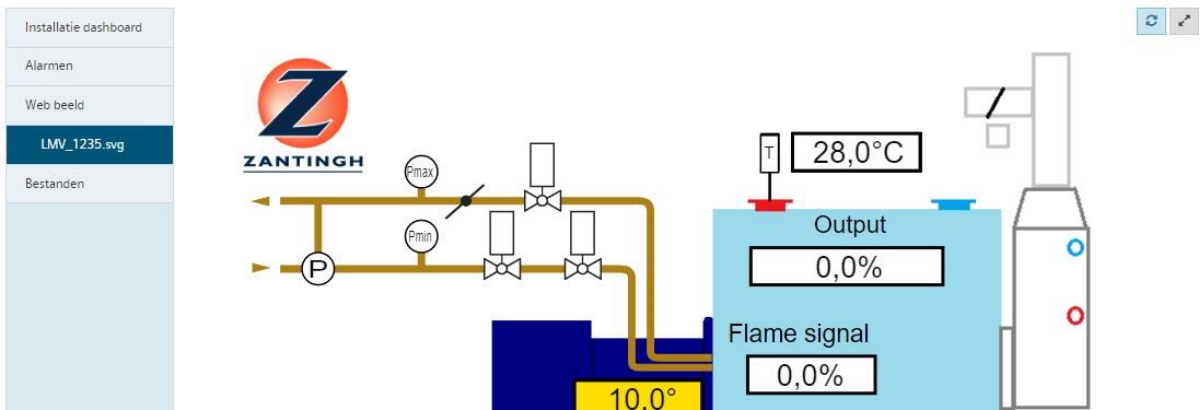
Zantingh BV - TC 300099

Uitgang - Actuele waarde	Brandstof selectie AZI - Actuele waarde	Vlam signaal - Actuele waarde	Bedrijfsuren Gas - Actuele waarde	Temperatuur (ext.) - Actuele waarde
0,00%	Gas	0,00%	122,0 ^h	29,0 ^{°C}

Climatix IC Zantingh ▾ Nederlands (Nederland) ▾

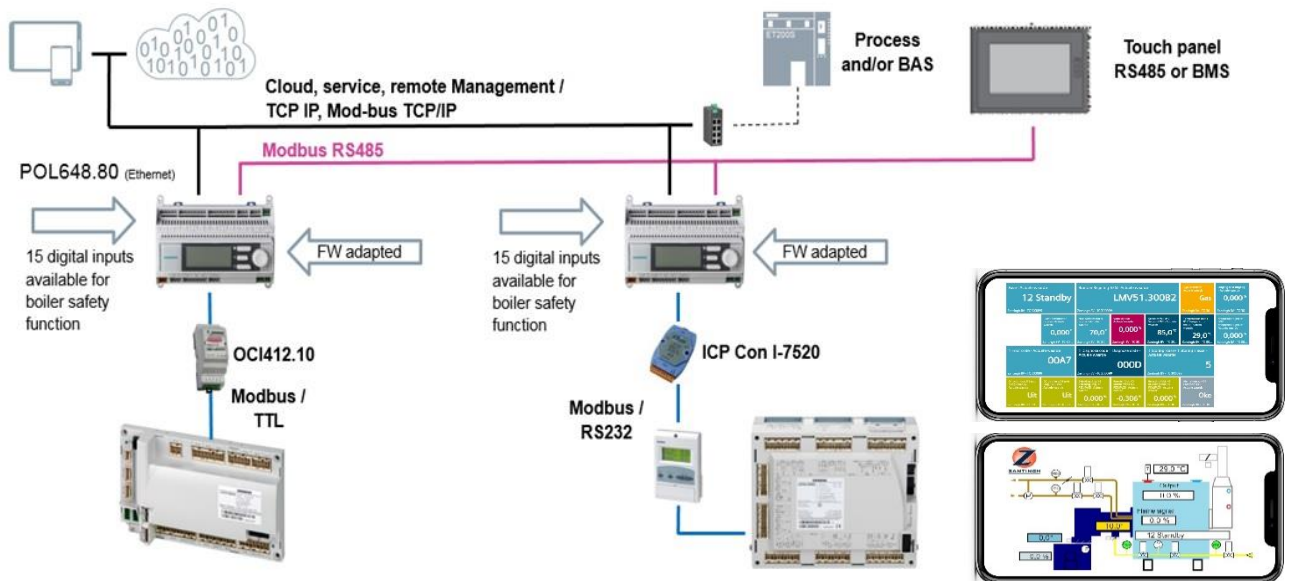
Dashboard Bediening

Bediening > Zantingh BV - TC 300099 (9 Aarbergerweg,Rij... > Web beeld > LMV_1235.svg



How does it work?

The central element of the system is the Siemens LMV burner management system with a Human Machine Interface developed by Zantingh and made visible on a 7" full-colour touchscreen. All relevant gas burner data from the burner management system (Siemens LMV), the boiler, any peripheral equipment and alarm notifications (possibly with email push notifications) are transferred via an internet connection to the cloud through a so-called POL controller with integrated gateway.



The data will then be displayed on the custom-made Climatix dashboard on any PC, tablet or smart phone – anywhere in the world. The status of systems can be viewed in real time, historical information is available and, if desired, push notifications can be sent automatically via email to the facility manager or owner of the system in the event of a calamity.

Bediening > Zantingh BV - TC 300099 (9 Aarbergerweg,Rij... > Installatie dashboard > Enduser



Bediening > Zantingh BV - TC 300099 (9 Aarbergerweg,Rij... > Installatie dashboard > Enduser



Installatie dashboard		
Alarmen		
Web beeld		
Bestanden		
Actieve alarmen		
Alarmhistorie		
Alarmtijd	Tekst	Alarm waarde
▶ 19-11-2020 10:59:10	Alarm ingang X8 Common X8 - Actuele waarde Actuele waarde	Oke
▶ 19-11-2020 10:58:17	Alarm ingang X8 Common X8 - Actuele waarde Actuele waarde	Fout
▶ 17-11-2020 12:12:44	- 17.11.2020 12:12:44 A7.AZL failure (A7.AZL failure-Alarm): OK	
▶ 17-11-2020 12:12:43	+ 17.11.2020 12:12:43 A7.AZL failure (A7.AZL failure-Alarm): Fault	
▶ 16-11-2020 13:05:23	Device connection ok	
▶ 16-11-2020 10:29:59	Device connection lost	
▶ 09-11-2020 11:54:56	Alarm ingang X11 Common X11 - Actuele waarde Actuele waarde	Oke
▶ 30-10-2020 11:15:41	Alarm ingang X11 Common X11 - Actuele waarde Actuele waarde	Fout
▶ 30-10-2020 11:15:41	Alarm ingang X11 Common X11 - Actuele waarde Actuele waarde	Fout
▶ 30-10-2020 11:07:34	Alarm ingang X11 Common X11 - Actuele waarde Actuele waarde	Oke
▶ 22-10-2020 13:22:49	Alarm ingang X11 Common X11 - Actuele waarde Actuele waarde	Fout
▶ 22-10-2020 13:22:49	Alarm ingang X11 Common X11 - Actuele waarde Actuele waarde	Oke
▶ 22-10-2020 13:22:49	Alarm ingang X11 Common X11 - Actuele waarde Actuele waarde	Fout
▶ 22-10-2020 13:20:09	Alarm ingang X11 Common X11 - Actuele waarde Actuele waarde	Oke
▶ 22-10-2020 13:19:19	- 22.10.2020 13:19:19 26.Loss of flame during operation (26.Loss of flame during operation-Alarm): OK	
▶ 21-10-2020 13:09:20	+ 21.10.2020 13:09:20 26.Loss of flame during operation (26.Loss of flame during operation-Alarm): Fault	
▶ 21-10-2020 13:09:16	+ 21.10.2020 08:14:58 26.Loss of flame during operation (26.Loss of flame during operation-Alarm): Fault	
▶ 21-10-2020 13:09:16	Alarm ingang X8 Common X8 - Actuele waarde Actuele waarde	Fout
▶ 21-10-2020 13:09:10	Device connection ok	

Industry standard

Climatix therefore increases the service value of the burner system throughout its life cycle. Data stored in the cloud can be shared with other companies or external systems. For applications in the greenhouse horticulture sector, the interface between the gas burner and the climate computer (Fiduface) has also been fully integrated.

Thanks to Climatix, Zantingh can continually monitor its customers' systems in the background and schedule preventive maintenance in good time. This means that calamities and unwanted system downtime can be prevented as much as possible. Zantingh provides the requisite Climatix hardware at a low cost and integrates it into the switch panel of the gas burner. To use the cloud services, customers purchase a subscription and pay a reasonable user fee.

The advantages at a glance:



Monitor remotely: Diagnostic tools enable you to gain an insight into potential problems, solve them remotely or ensure that service and maintenance workers arrive on site with the right components to solve the problem.



Improve performance: Continuous data analysis facilitates performance optimisation at any time. In addition, tools for planned maintenance can reduce equipment wear and tear, thereby increasing efficiency and significantly reducing the number of unplanned interventions.



Increase reliability: Analysing the collected data helps to identify problems before they cause a breakdown, thereby increasing the reliability of equipment.



Integration with other systems: Climatix is an open platform; so it is easy to integrate existing or new business applications.

MAXIMISE CONTROL OF AND INSIGHTS INTO YOUR BURNER SYSTEM WITH CLIMATIX!

More information?

Click [here](#) to watch our instructional video.

For more information, call or email our Sales Department:

Zantingh B.V.

Sales Department

Telephone: +31 (0) 297 - 219 100

Email: info@zantingh.com