

# QUICK SET UP GUIDE ZANTINGH CO DETECTOR



Please read the provided operating and instruction manual

Telephone (reception)

+31 (0)297 219 100

Telephone (service department)

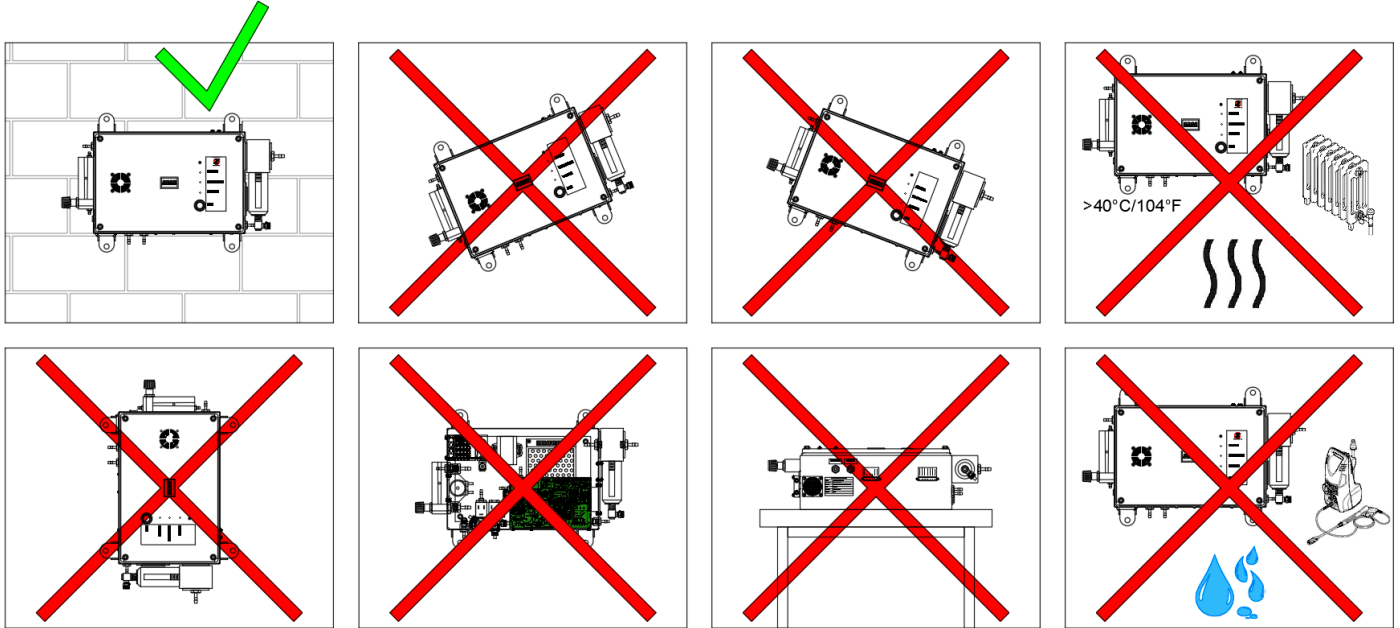
+31 (0)297 219 125



ZANTINGH

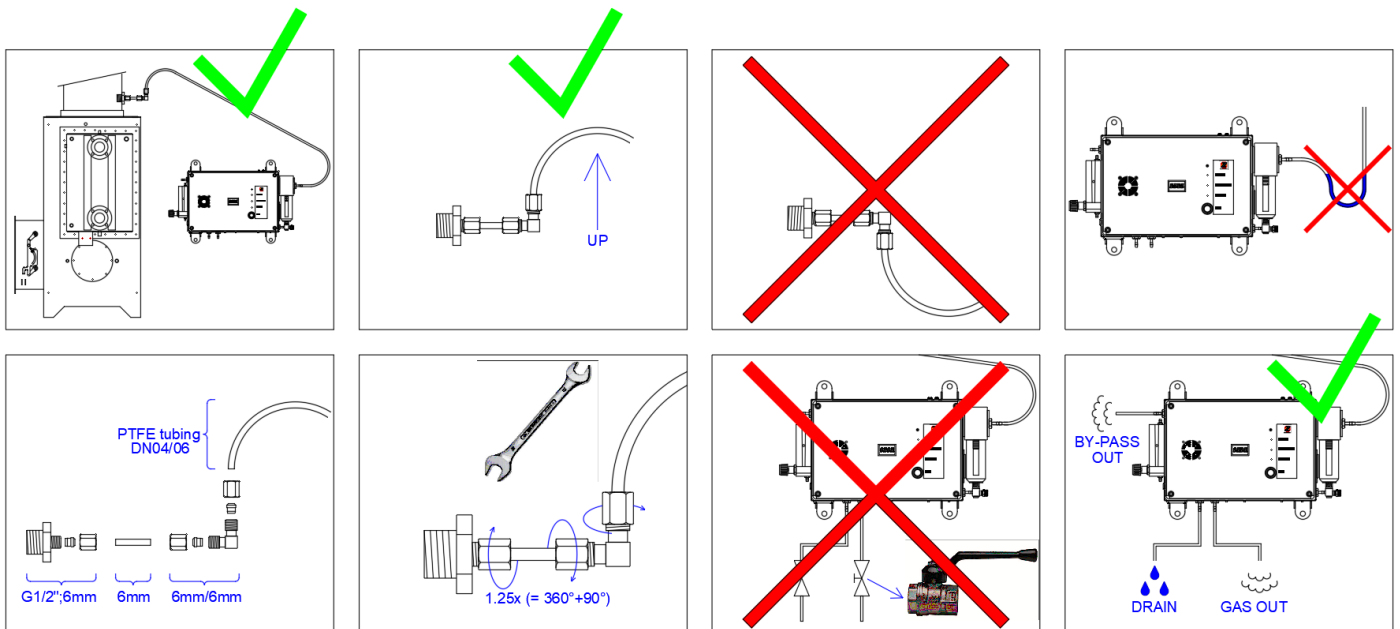
## 1. Mounting the device

- mount upright and level to a solid wall, do not lay flat (on a horizontal surface)
- do not install without its lid, always leave the device covered
- do not install in a humid environment
- do not install close to a heat source or in a place at a temperature below zero degrees
- **never suspend from a condenser** or any other **vibrating** parts



## 2. Connecting the hose

- make sure the sampling hose **first goes upwards from the sampling point side**, to prevent condensate to flow back to the sampling point
- prevent that a water seal is formed (water trap / siphon effect)
- make sure the angled connector with compression fittings is assembled correctly, the connector should point upwards
- tighten the nuts well to fix the compression fittings (rotate 1¼ times)
- the used sampling hose should never be **longer than 30 meters and not larger than Ø6mm**
- make sure that the following connections are always free:
  - condensate drain
  - sample gas out
  - by-pass out
  - calibration gas in



# QUICK SET UP GUIDE ZANTINGH CO DETECTOR



Please read the provided operating and instruction manual

Telephone (reception) +31 (0)297 219 100

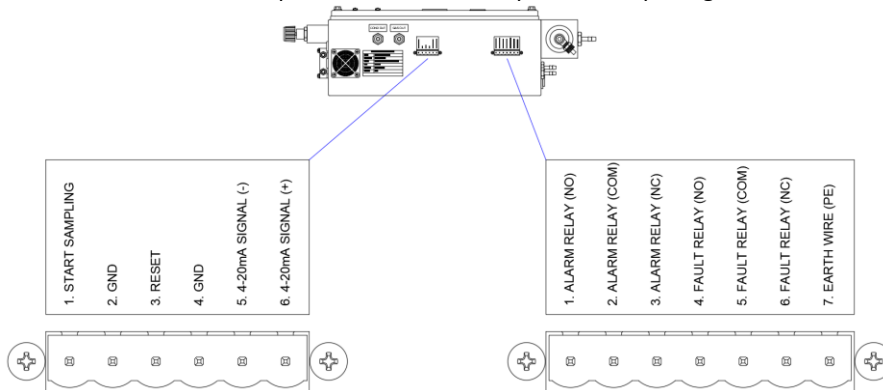
Telephone (service department) +31 (0)297 219 125



ZANTINGH

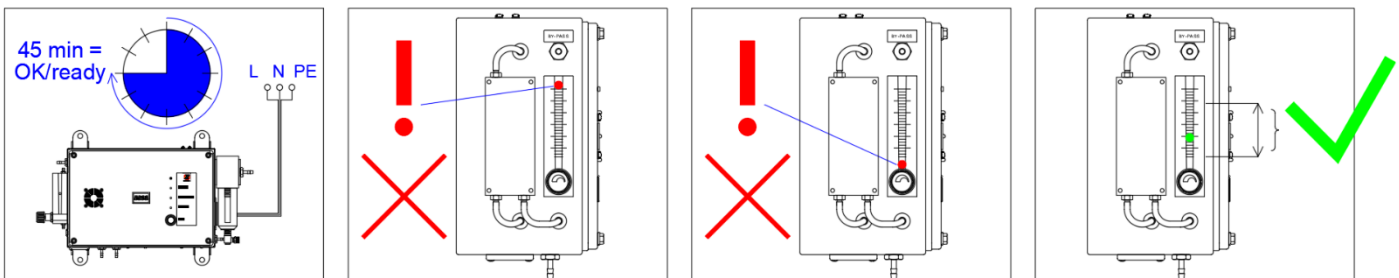
## 3. Connecting the device electrically

- use the 6- and 7-pole connectors for input and output signals



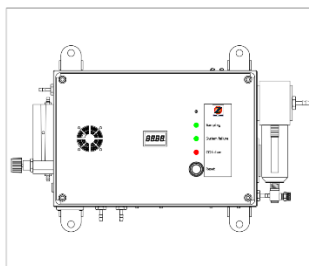
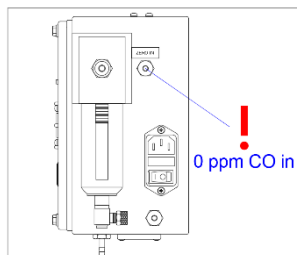
## 4. Turning on the device

- after turning on the device, the CO detector is ready for service (metering) after 45 minutes
- adjust the needle valve on the flow meter for a correct by-pass flow (the bullet should be in the green section)
- never turn off the device



## 5. Functionality of the device

- the value on the display is the current measurement value of the CO gas concentration in ppm
- an error message "OLL" or "OHH" is displayed when the measurement value is out of range (<0 ppm or >100 ppm)
- the display remains blanc if there is a temperature, flow or hardware issue
- while purging (once every 60 minutes) no CO gas should be present near the device; exhaust gasses and (cigarette) smoke have a negative effect on its functionality
- three bicolour LEDs indicate the status according to the table below



LED name	RED	GREEN (constant)
Sampling	N/A	- System is measuring.
System failure	- Too little or no flow ( <i>flashes</i> ) - Internal temperature too low ( <i>constantly on</i> )	- Flow and temperature are appropriate.
CO failure	- CO concentration is too high. ( <i>&gt;1 minute at set value or at &gt;70 ppm</i> )	- CO concentration within programmed limits.

## 6. Maintenance

- the filter should be replaced every 6 months
- the device needs to be calibrated every 12 months; always use 100% nitrogen (N<sub>2</sub>) calibration gas
- the sensor should be replaced every 2-3 years